

SMOKE SIGNALS

Volume 3, Issue 2

Apr, May, Jun 2026

INSIDE THIS ISSUE

Can we make it?	Pg 2
In case of emergency	Pg 2
Home Hardening	Pg 2
Kids Corner	Pg 3
Community calander	Pg 3
Wordsearch	Pg 4

POINTS OF INTEREST

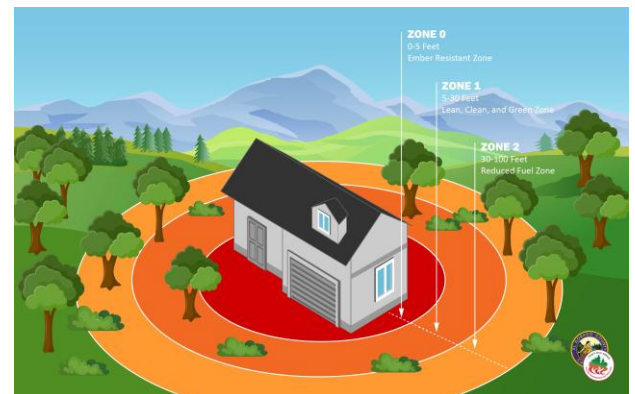
- Create a defensible space around your home.
- Make sure emergency vehicles can make it to your home.
- Know the evacuation levels
- What are two way's out of every room in your home?

SPRING CLEANING

We live in an area that has a high risk for wildfires. Last year we had a couple that were close but not directly in our district. There are steps to help you get ready for this disaster and it just has to be creating a defensible space around your house. This defensible space will create a safer area for firefighters to operate if they have the capacity to defend your home. Creating a buffer zone by removing weeds, dried grass, brush, and other vegetation helps keep the fire away from the house and reduces the risk of ignition from flying embers

An ember is a small, glowing fragment from a wildland fire that is carried by wind. Embers are light enough to travel a long distance and are the primary reason homes ignite. Embers travel inside your home through vents, windows and other openings. If your home is within one mile of a natural area, District 5 residents are, it may be considered part of an ember zone.

Red Flag Warnings are issued by the National Weather Service when low humidity, warm temperatures, dry fuels, and strong winds could combine to produce extreme fire behavior. Fire that occurs during a red flag day can be very dangerous and spread very quickly. You should always follow instructions provided by the emergency response and be prepared to take immediate action.



What type of bow can't be tied or untied?.....a rainbow

BURN PERMITS

At fire district 5 we offer burn permits to be purchased. Why do you need a permit you might ask? Here are some guidelines. Our permits are only for yard waste and piles no bigger than 4x4x3. Yard waste includes leaves, pine needles, small tree prunings and other natural yard and garden waste. This does not include garbage, asphalt, paints, plastics, construction/demolition debris metal or any other non vegetation substance. Our burn permits do not override DNR permits, they incopmass bigger piles. Our burn permits are \$25 dollars, with a site visit. If you have a DNR permit you may not need a permit from the department, there is a little overlap. As a fire district we do not require you to purchase a burn permit, however it is highly suggested to make sure there is no illegal burning being done and the district has an outreach to help prevent any accidental wildfires starting. If you have any sort of burn permit there are two different numbers that you should be calling before starting your pile, WA DNR at 1-800-323-BURN(2876) to determine if there are any burn bans in place and Spokance Regional Clean Air at 477-4710 for any restrictions based on air quality. If you would like to purchase a burn permit through the Fire Department there are blank ones at the station or on our webpage, scfd5.org.

CAN WE MAKE IT TO YOU?

If you call 911 can the emergency vehicles reach your location? Most emergency vehicles are bigger, heavier, and harder to maneuver than your average vehicle. We want to make sure we can get to you safely and in a timely matter. With that in mind here are some things to take into consideration while planning any yardwork this spring:



1. Make sure there is an address sign at the beginning of your driveway that can be seen from both directions. The fire department can make you one for a small fee
2. Make your home visible from the road so emergency vehicles can see if it is safe to proceed.
3. Clear trees, branches and brush from your driveway so it is at least 12 ft wide and there is 14 ft clearance.
4. If you have a gate that we will need to access and it has a code please inform 911 when you call or let the district know, we do have a secure way to keep the code.
5. Create a safe space for emergency vehicles to turn around, preferably next to your house.
6. Be sure your driveway surface is able to support the weight of an emergency vehicle all year round.

We are here to help you when you call but we have to reach you first.

IN CASE OF AN EMERGENCY

If there is an emergency in the area you will most likely be getting evacuation notices. Make sure you know what each level means and how best to prepare before they happen.

Level 1

BE READY

Prepare to evacuate

Be aware of danger in the area

- ✓ Stay informed
- ✓ Have your plan & go-kit ready
- ✓ Act early if you or your loved ones can't move quickly.

Level 2

BE SET

To evacuate at a moment's notice

Significant danger in the area

- ⚠ Follow your evacuation plan & grab your go-kit
- ⚠ Check news & radio for updates
- ⚠ Conditions change rapidly. Leave if you feel unsafe.

Level 3

GO NOW!

Leave Immediately!

Extreme danger in the area

- Leave without delay. It is unsafe to stay
- Do not stop to gather belongings or protect your home.
- Do not return until officials announce the area is safe.

HARDEN YOUR HOME

Construction materials and the quality of the defensible space surrounding the structure are what increase the chance of survival in a wildfire. Here are some helpful tips:

- Balconies & Decks: Use noncombustible materials, bring furniture into your home, remove any combustible items from under your decks; including pine needles, leaves and grass.
- Roofs: Roof valleys, barrel tiles and rain gutters are all points where you can have debris buildup, make sure you check them often and remove any combustibles.
- Vents: use corrosion resistant metal mesh to screen any vents and check them regularly to remove any debris.
- Walls/Fencing: siding and fencing can provide crevices for embers to nestle and ignite, use noncombustible material when possible and don't attach to the house
- Windows & Doors: embers can enter gaps in doors and windows, install weather proofing where you can. Plants or storage near windows can ignite from embers and generate heat causing windows to break or melting frames. Using dual-paned windows with tempered glass is less likely to shatter from radiant heat.

Community Activities

April:

5th-Easter

May:

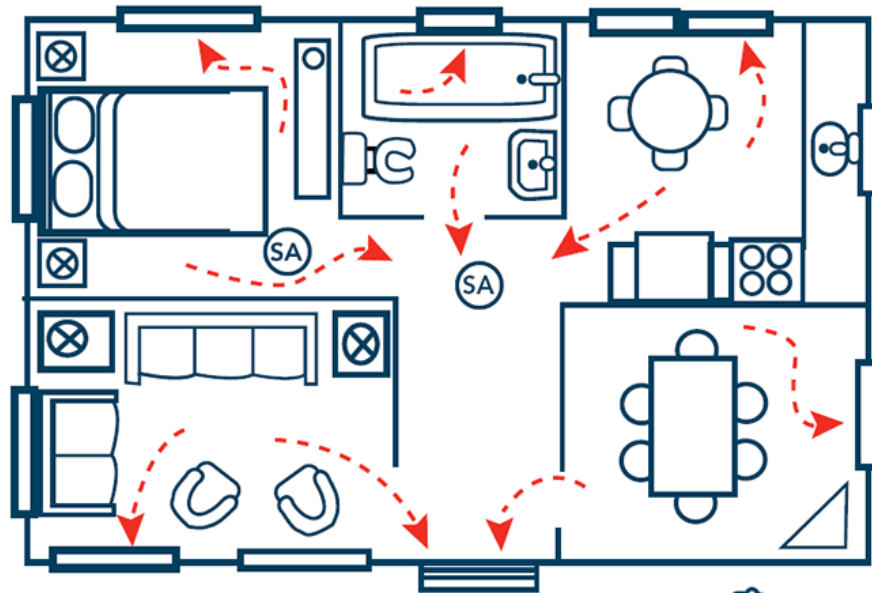
10th-Mothers Day

25th- Memorial Day

June:

19th-Juneteenth

21st- Father's Day



Meeting Place

Here is an example of an emergency evacuation for your home.

KIDS CORNER

Looking for a way to engage your kids to help them understand fire related topics? Here is one way to start the year off right, an ESCAPE PLAN. Every public building has to have one, so why shouldn't your home have one also? As an adult you might not think about how you would get out in case of an emergency, it doesn't just have to be a fire. But as kids they don't know what could be an emergency or where to go if there is one.

When you start to think about an escape plan/route devise a plan with a kids perspective.

- Can the doors and/or windows open easily
- Is anyone handicap where they need extra help
- Where is a safe spot away from the house that is easily accessible?
- Is your house a multi-level house? Everyone should be able to exit from every level
- Are there two exits for every room

Make sure you draw your house layout, including doors and windows, and plan two ways out of every room with your meeting spot marked also. Make sure you practice your fire escape at least twice a year, maybe more with kids until they have it mastered. Make any drill you run as realistic as possible.

If you would like any more information or a template for your house plan there are many websites to help, listed below are two of them:

A kid focused website: sparkyschoolhouse.org/resource/home-fire-escape-plan-grid

A general information website: www.nfpa.org/public-education/staying-safe/preparedness/escape-planning

C L E A N I N G A L F D E R L
T I A E I T L E M S A Y A G V
O R S L A E E O I S P G N D E
N Y T S E F A I A E S U C E H
R S E I T I V I T C A E E U I
H N R A E R A W A R N I N G C
A T I G P E R M I T E G S T L
R C T L Y C N E G R E M E R E
D A R N O I T A U C A V E E E
E A E E E L A S N O I A R M T
N E E N S C R C S I V G V E E
V E S C C I A H A I A R G E E
E D P L A N E N R A R E R G E
G N I R P S E S E T N C F P G
C A E S E M B E R I C I R E S

YOU COULD BE A WINNER

Find the below words and return to the the firehouse for a chance to win a \$5 gift card to Eagles Nest!! ***Make sure your name is on the word Search***

- ACTIVITIES
- CLEANING
- EASTER
- EMBER
- EMERGE CNY
- ESCAPE
- EVACUAITON
- FIRE
- HARDEN
- PERMIT
- PLAN
- RED FLAG
- SPRING
- TREES
- VEHICLE
- WARNING

SPOKANE COUNTY FIRE DISTRICT 5

17217 W Four Mound Rd
Nine Mile Falls WA 99026

Phone: 509.795.4793
Website: scfd5.org
E-mail: admin@scfd5.org

